

\$1,500,000 - 1102 Paseo De Onate # A, Espanola

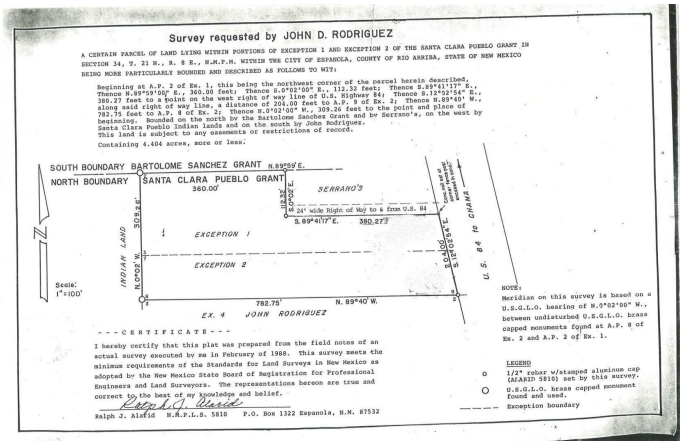
MLS® #202500432

\$1,500,000

0 Bedroom, 0.00 Bathroom,
Land on 4.40 Acres

N/A, Espanola, NM

A great vacant lot, located in an area with many commercial businesses, such as: Credit Union, Post Office, Title Company, Rio Arriba County offices, three Gas Stations, car washes, etc., is also close to the Northern New Mexico College. It has great potential for several types of developments. Check with the Espanola City Planning and Zoning regarding potential development



Listing Details

Listing Agent	Emery Maez
Listing Office	The Maez Group

Essential Information

MLS® #	202500432
Price	\$1,500,000
Bathrooms	0.00
Acres	4.40
Type	Land
Sub-Type	Commercial
Status	Active

Community Information

Address	1102 Paseo De Onate # A
Area	31-Espanola
Subdivision	N/A
City	Espanola
County	Rio Arriba

State	NM
Zip Code	87532

Amenities

Utilities	Electricity Available, Natural Gas Available, Sewer Available, Water Available
-----------	--

Exterior

Exterior Features	None
-------------------	------

School Information

Elementary	Espanola
Middle	Carlos F. Vigil Espanola Middle School
High	Espanola Valley High

Additional Information

Date Listed	February 20th, 2025
Days on Market	233
Zoning	CRAD



The data relating to real estate for sale in this Website comes in part from the Internet Data Exchange ("IDX") program of Santa Fe Association of REALTORS®, Inc. from a copyrighted compilation of listings. Real estate listings held by brokers other than NM home Team Realty are marked with the IDX Logo. All data in this Website is deemed reliable but is not guaranteed accurate, and should be independently verified. The information provided is for consumers' personal, non-commercial use and may not be used for any purpose other than to identify prospective properties consumers may be interested in purchasing. All properties are subject to prior sale or withdrawal. All Rights Reserved.