

\$340,100 - 1025 S Summit Ridge # Lot 21, Santa Fe

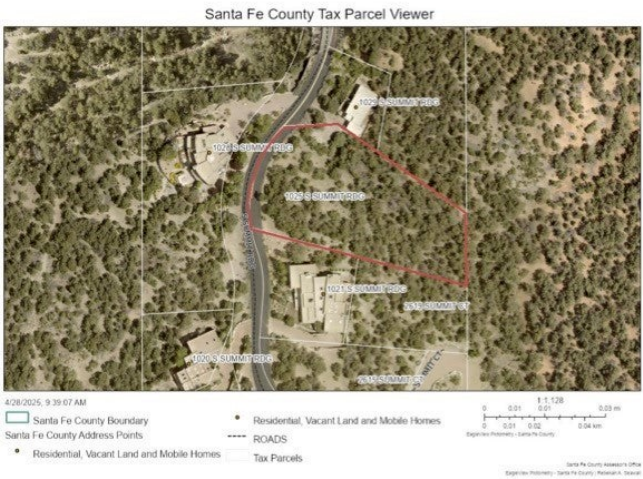
MLS® #202501786

\$340,100

0 Bedroom, 0.00 Bathroom,
Land on 0.87 Acres

N/A, Santa Fe, NM

Nestled in the northeast foothills of Santa Fe, this .87-acre homesite sits in the prestigious gated community of High Summit Community and backs National Forrest. Beautifully wooded with piñon and juniper, the property offers sweeping views of both the Sangre de Cristo and Jemez Mountains. It comes fully equipped with underground utilities—water, sewer, natural gas, phone, and cable—ready for immediate development. Though it feels like a secluded mountain retreat, you're just minutes from Santa Fe’s celebrated restaurants, art galleries, and cultural landmarks. The Historic Downtown Plaza is only 10 minutes away, and the Santa Fe Ski Area is just a 15-minute drive. Plus, soils testing is complete, making it ready for your dream home.



Listing Details

Listing Agent Helen Jackson
Listing Office Q Realty, Inc.

Essential Information

MLS® # 202501786
Price \$340,100
Bathrooms 0.00
Acres 0.87
Type Land
Sub-Type Residential

Status Active

Community Information

Address 1025 S Summit Ridge # Lot 21
Area 1-SF City Limits NE
Subdivision N/A
City Santa Fe
County Santa Fe
State NM
Zip Code 87501

Amenities

Utilities Natural Gas Available, High Speed Internet Available, Sewer Available, Water Available, Electricity Available
Features Views, Wooded

Exterior

Lot Description Views, Wooded

School Information

Elementary Carlos Gilbert
Middle Aspen Community Magnet School K-8
High Santa Fe

Additional Information

Date Listed April 30th, 2025
Days on Market 164
Zoning R-1, 2, 3, 4, 5, 6
HOA Fees 550
HOA Fees Freq. Quarterly



The data relating to real estate for sale in this Website comes in part from the Internet Data Exchange ("IDX") program of Santa Fe Association of REALTORS®, Inc. from a copyrighted compilation of listings. Real estate listings held by brokers other than NM home Team Realty are marked with the IDX Logo. All data in this Website is deemed reliable but is not guaranteed accurate, and should be independently verified. The information provided is for consumers' personal, non-commercial use and may not be used for any purpose other than to identify prospective properties consumers may be interested in purchasing. All properties are subject to prior sale or withdrawal. All Rights Reserved.